



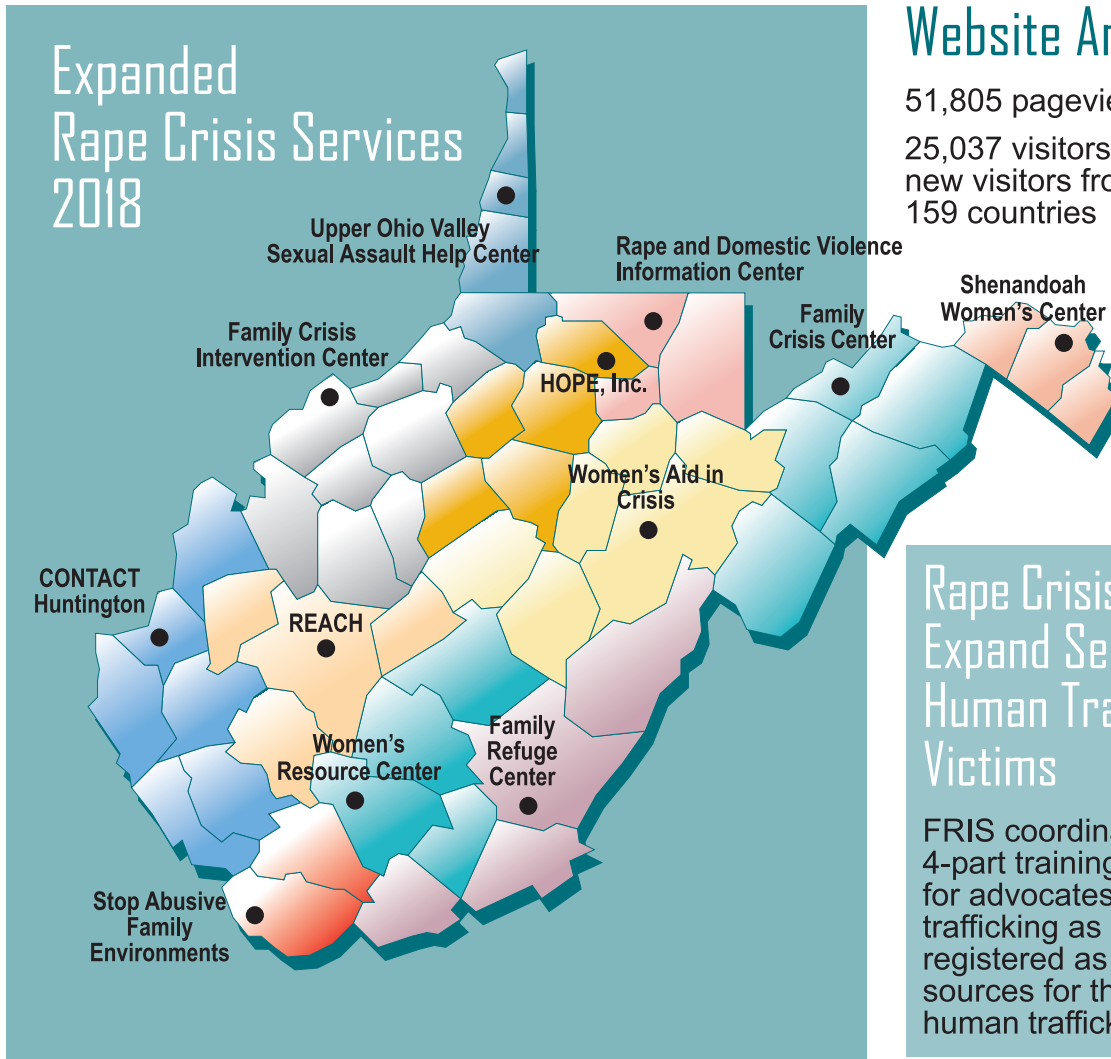
West Virginia Foundation for Rape Information and Services

2017-18 Annual Report

	CONTACT Rape Crisis Center Huntington 304-399-1111
	Family Crisis Center Keyser 304-788-6061
	Family Crisis Intervention Center Parkersburg 304-428-2333
	Family Refuge Center Lewisburg 304-645-6334
	HOPE, Inc. Fairmont 304-367-1100
	Rape and Domestic Violence Information Center Morgantown 304-292-5100
	REACH The Counseling Connection Charleston 304-340-3676
	Sexual Assault Help Center Wheeling 304-234-8519
	Shenandoah Women's Center Martinsburg 304-263-8292
	Stop Abusive Family Environments Welch 304-436-8117
	Women's Aid In Crisis Elkins 800-339-1185
	Women's Resource Center Beckley 304-255-2559



Expanded Rape Crisis Services 2018



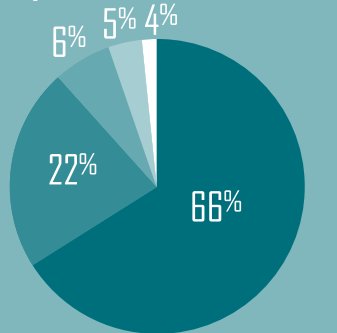
Website Analytics

51,805 pageviews
 25,037 visitors – 88.5% new visitors from 159 countries

Rape Crisis Centers Expand Services to Human Trafficking Victims

FRIS coordinated a 4-part training series for advocates on human trafficking as the centers registered as referral sources for the national human trafficking hotline.

Expenditures



- Contractual Services / Rape Crisis Centers
- Coalition Staff
- Training
- Awareness / Educational Materials / Printing
- Operating Expenses

FRIS is on Social Media!

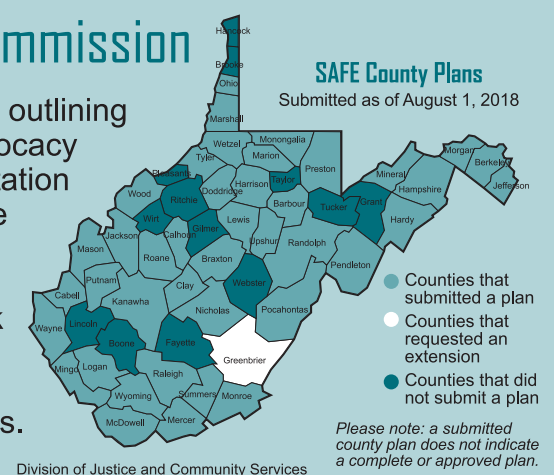
In April, FRIS launched a Facebook page, reaching over 800 community members in its first 90 days. Our social media presence enables the sharing of relevant information, promotes training events, and encourages social responsibility for reducing sexual violence and stalking.

Sexual Assault Kit Initiative (SAKI)

The SAKI project of the state's unsubmitted kits focused on the testing phase, with over 2400 kits/cases estimated to be reviewed for testing before the project's end. To date 685 cases are in the review process for potential uploading to the national DNA database (CODIS); 183 have been entered into CODIS already resulting in 35 hits/matches in the state's portion of the database.

Sexual Assault Forensic Examination (SAFE) Commission

County plans outlining forensic, advocacy and transportation services were due to the Commission and feedback was provided to enhance local protocols.



Campus Climate Surveys

FRIS facilitated the coordination of a standardized campus experiences survey on nine residential campuses, with over 3350 students participating.

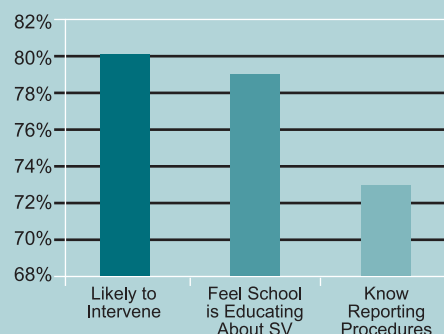


Figure 1: Willingness to Intervene in High Risk Situations and Knowledge About Sexual Violence

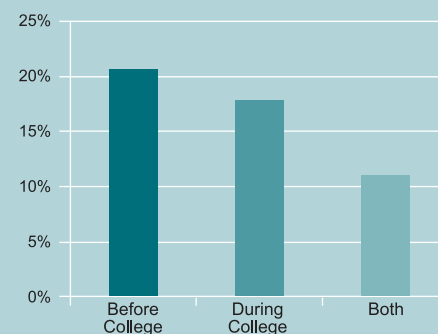


Figure 2: Students Experiencing Unwanted Sexual Contact

2017-18 Trainings

39 training events
 1,210 attendees

Highlights:

- Symposium attendance reached maximum capacity at 265
- Facilitated a record 12 webinars